



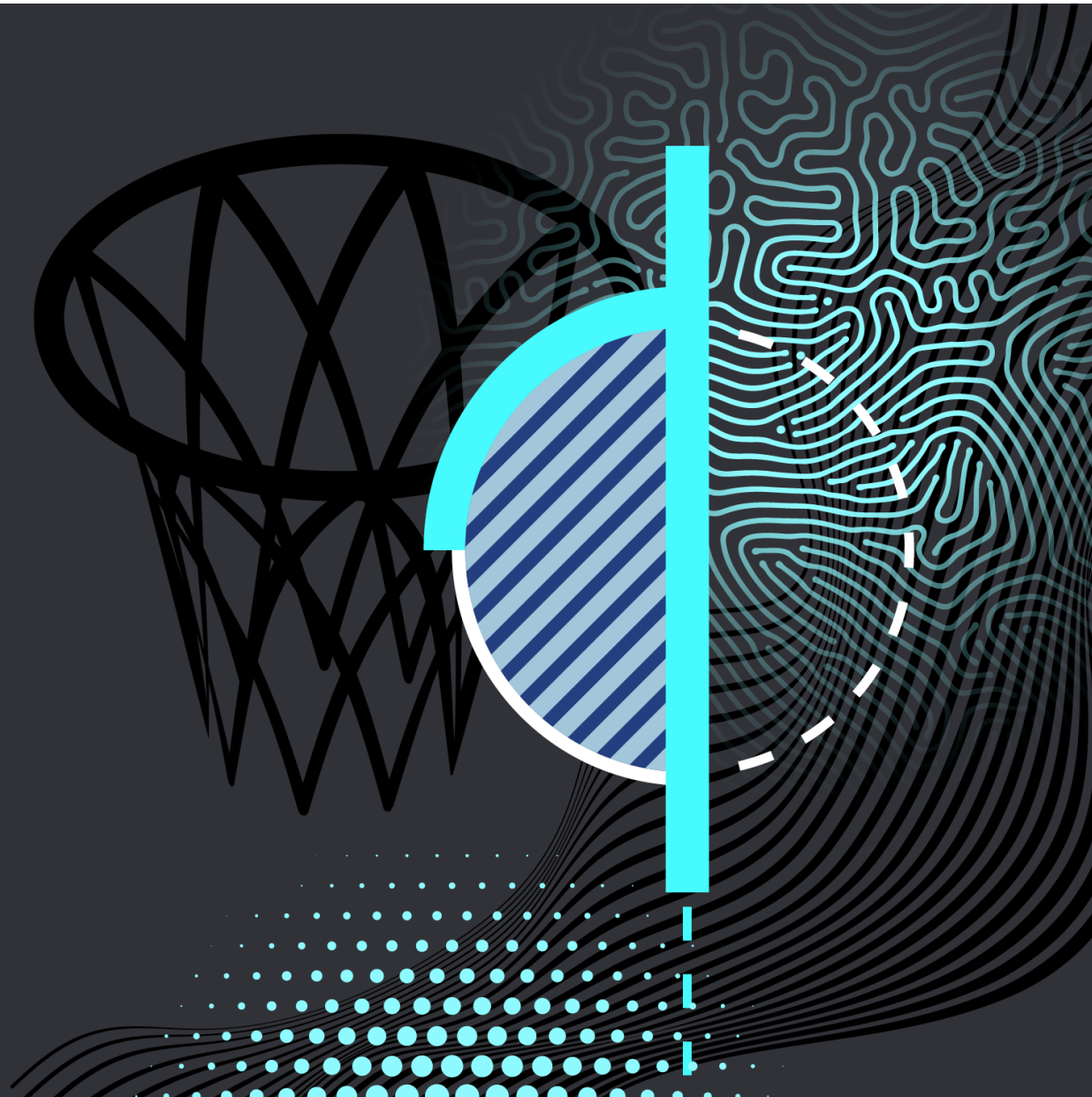
FIBA
EUROBASKET
CYPRUS | FINLAND | POLAND | LATVIA

EUROBASKET25 VOLUNTEERS

WELCOME!

Jaana Helminen

Sustainability and Volunteer Manager



A close-up photograph of a basketball player's hands holding a basketball through a hoop net. The player's arms are visible, showing some tattoos. The basketball is orange with black lines. The net is white and the hoop is orange. The background is dark and out of focus.

VOLUNTEER INFO PACKAGE 1

NO EVENTS WITHOUT VOLUNTEERS!

This is a unique opportunity!

Volunteering at the tournament is diverse, fun, and inspiring.

Join the volunteer training sessions and commit to doing your tasks to the best of your ability.

Stick to the agreed instructions, rules, and commitments.

Remember: you don't need to know everything – but you can always ask or find out.

There will be around 400 volunteers and over 15 volunteer teams at the tournament.

Team leaders know the practicalities and will guide your work.

We are all part of the Finnish basketball family and the EuroBasket 2025 tournament organization.

We also represent the Finnish basketball community and the tournament organization.

We are all expected to be reliable, punctual, proactive, and flexible.

Let's work together according to fair play, with equality and inclusion for all.

Zero tolerance for bullying and harassment!

Let's enjoy the experience and the event – and don't forget to smile!



VOLUNTEERING TIMELINE





BASIC INFO ABOUT THE EVENT

VOLUNTEER TEAMS & LOC

ACCREDITATION, GEAR & TRANSPORT

SHIFTS, MEALS & SAFETY

**DEDICATED VOLUNTEER SEATS
& FAN SPIRIT**



TAMPERE
FINLAND

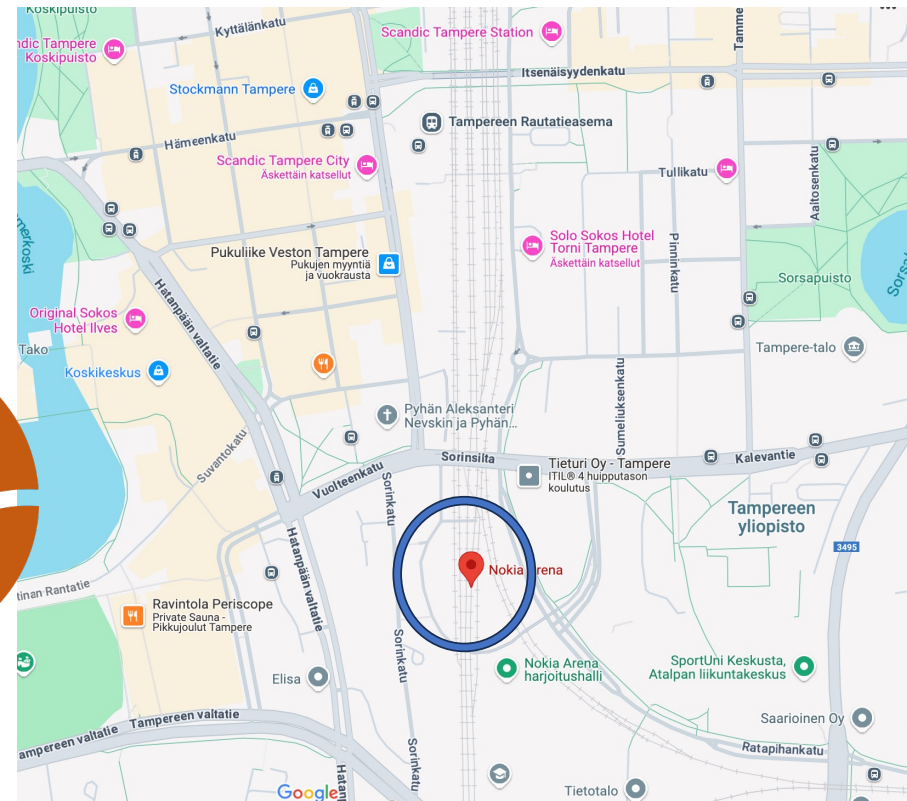
BASIC INFO ABOUT THE EVENT

- **Event arena: Deck Arena (Nokia Arena)**
- **Practice hall: Kauppi Sports Center**
- **Official Fan Zone**
- **Market square event area**
- **Teams**
- **Game Schedule**
- **Mascot: Marky Mark**



DECK ARENA (NOKIA ARENA)

12 000+ SEATS

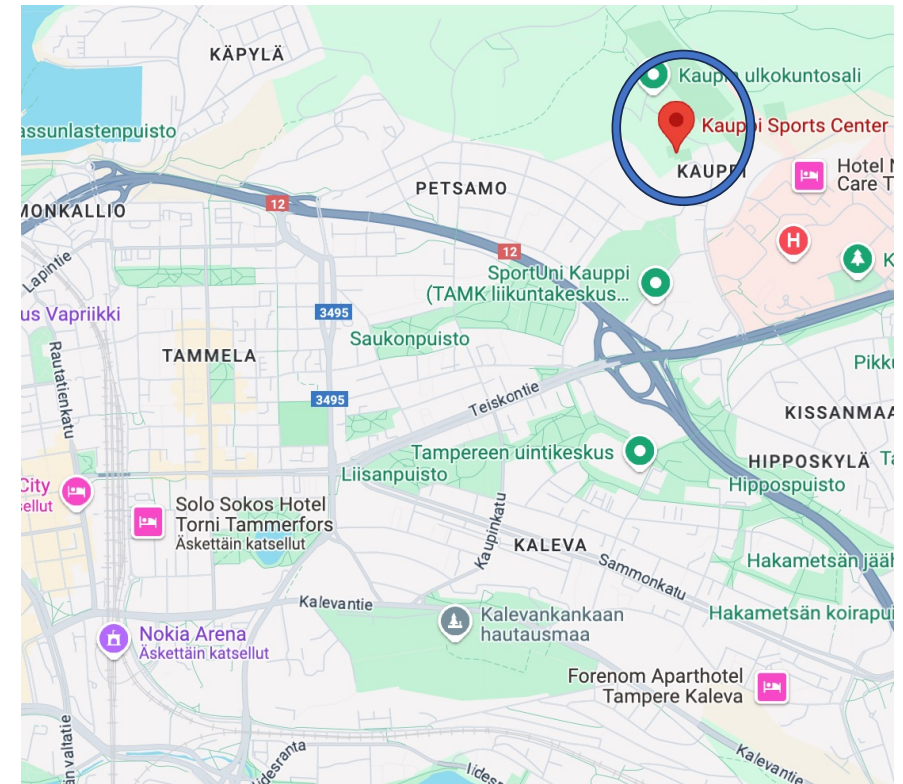


[Kansikatu 3, 33100 Tampere](#)

Venue map and access routes will be available later.



KAUPPI SPORTS CENTER PRACTICE HALL

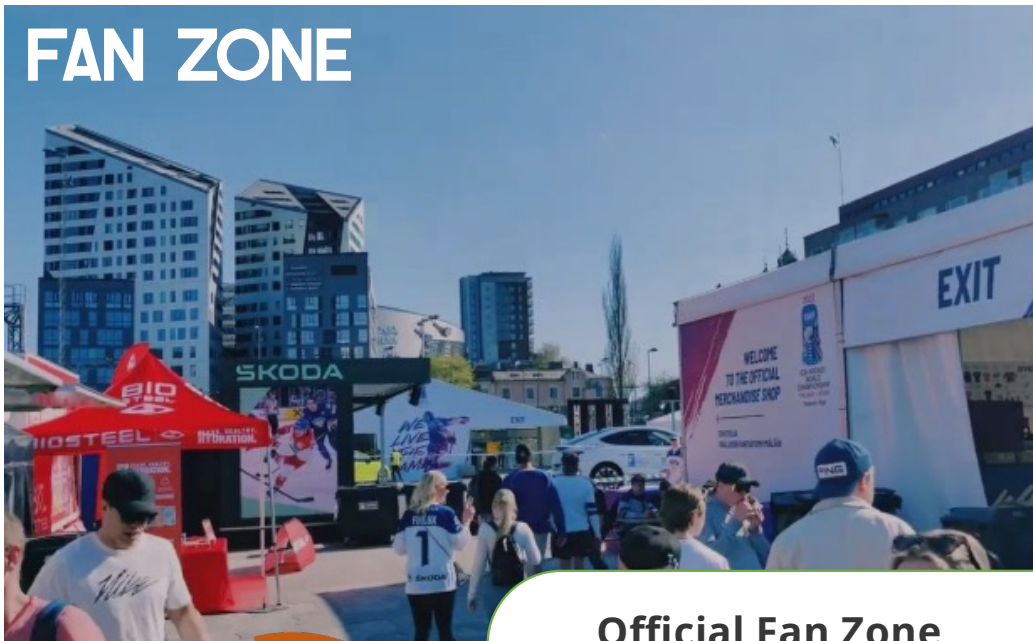


[Kuntokatu 17, 33520 Tampere](#)

Venue map and access routes will be available later.



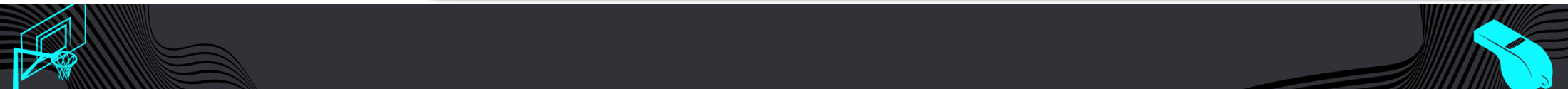
FAN ZONE



Official Fan Zone

The official Fan Zone of the tournament is open to everyone and free of charge. The area includes a viewing tent with a big screen, basketball courts, various activities, a children's play area, food and beverage services, a cloakroom, and a first aid station.

Open on game days from 12:00 PM to 1:00 AM.



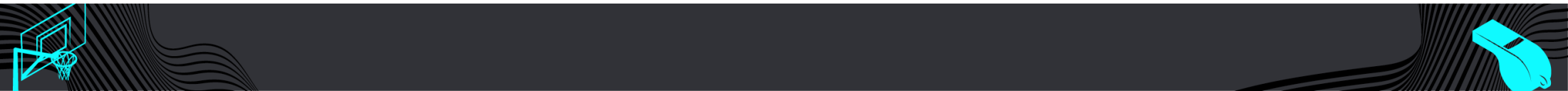
MARKET SQUARE EVENT AREA



The event area is located at Keskustori, central Tampere.

It features a summer terrace, a large screen, basketball court, activities, the Susi Fan Shop, and the sustainability initiative Unified Through Basketball by Basketball Finland.

Open daily from August 25 to September 3, from 12:00 PM to 8:00 PM.



EVENT INFO



Group stage locations

Group A: Riga, Latvia

Group B: Tampere, Finland

Group C: Limassol, Cyprus

Group D: Katowice, Poland

Group stage game days

- Wednesday, August 27, 2025
- Friday, August 29, 2025
- Saturday, August 30, 2025
- Monday, September 1, 2025
- Wednesday, September 3, 2025

Knockout stage and finals in Riga: September 6–14, 2025

FIBA EUROBASKET
CYPRUS | FINLAND | POLAND | LATVIA

GROUP A	GROUP B	GROUP C	GROUP D
SRB	GER	ESP	FRA
LAT	LTU	GRE	SLO
CZE	MNE	ITA	POL
TUR	FIN	GEO	ISR
EST	GBR	BIH	BEL
POR	SWE	CYP	ISL
RIGA LATVIA	TAMPERE FINLAND	LIMASSOL CYPRUS	KATOWICE POLAND

AUGUST 27 – SEPTEMBER 14

MAKE YOUR MARK

EVENT INFO

Teams in the Tampere Group

- Finland
- Germany
- Great Britain
- Sweden
- Lithuania
- Montenegro

Day session games:

- 1:30 PM →
- 4:30 PM →

Evening session game:

- 8:30 PM → Susijengi (*Team Finland*)



FIBA EUROBASKET 2025

GROUP B
TAMPERE, FINLAND

AUG 27

 13:30 
 16:30 
 20:30 

AUG 29

 13:30 
 16:30 
 20:30 

AUG 30

 13:30 
 16:30 
 20:30 

SEP 1

 13:30 
 16:30 
 20:30 

SEP 3

 13:30 
 16:30 
 20:30 

GAMES IN TAMPERE



Wed

27.8.

Day

13:30 GBR-LTU
16:30 MNE-GER

Evening

20:30 SWE-FIN

Rest day

Fri

29.8.

Day

13:30 GER-SWE
16:30 LTU-MNE

Evening

20:30 FIN-GBR

Sat

30.8.

Day

13:30 LTU-GER
16:30 GBR-SWE

Evening

20:30 MNE-FIN

Rest day

Mon

1.9.

Day

13:30 SWE-MNE
16:30 GER-GBR

Evening

20:30 FIN-LTU

Rest day

Wed

3.9.

Day

13:30 MNE-GBR
16:30 LTU-SWE

Evening

20:30 FIN-GER

MASCOT MARKY MARK



BASIC INFO ABOUT THE EVENT

VOLUNTEER TEAMS & LOC



VOLUNTEER TEAMS



Backbone of all operations

- Event office
- Construction and maintenance
- Accreditation
- Catering and lounge
- Sustainability

Support for Teams, FIBA, and Games

- Team hosts
- Hotel info desks
- Transportation
- Service Team
- Ball-boys & floor sweepers
- Communications and media services
- Game recordings service

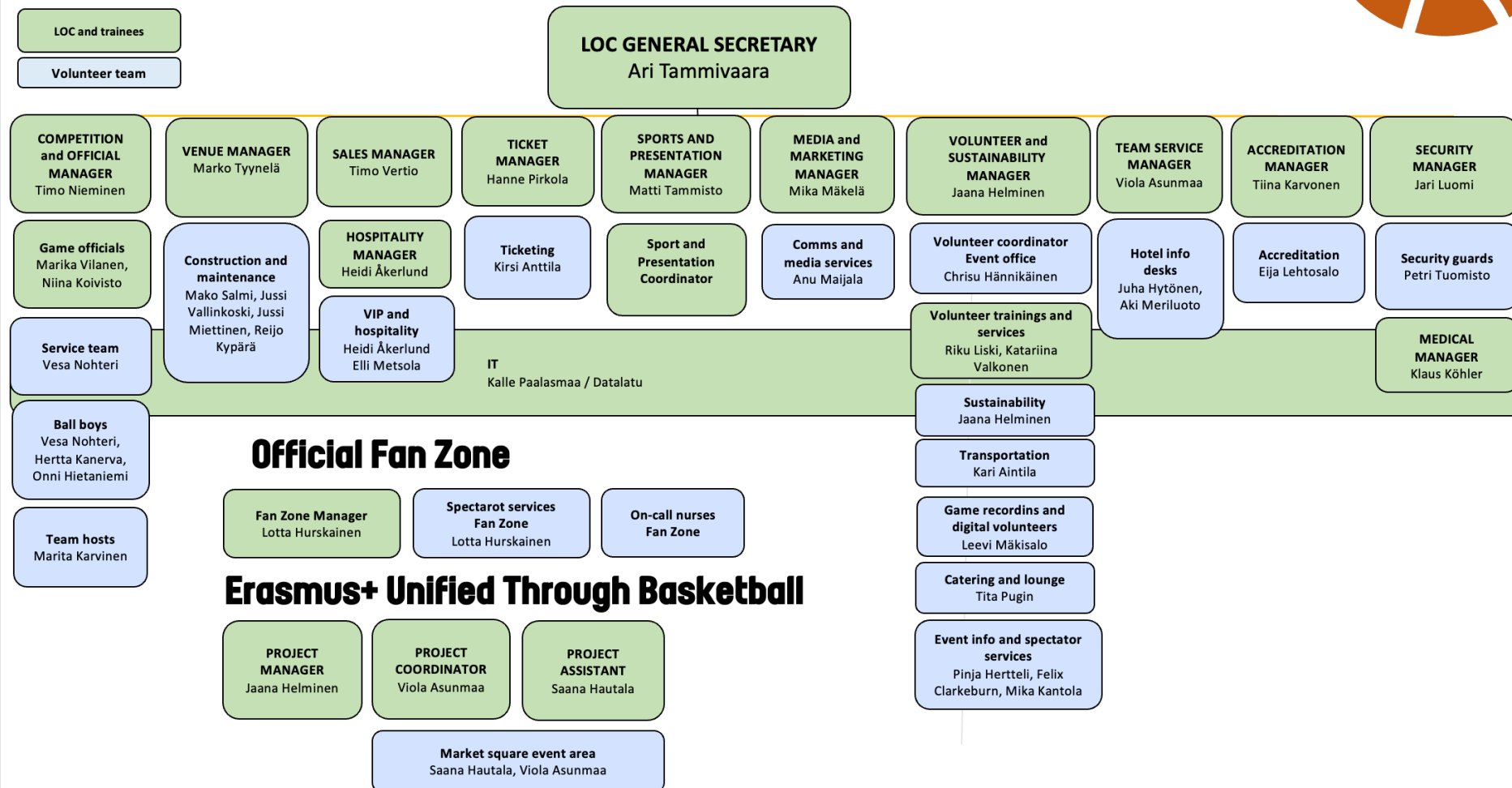
Spectator and guest services

- Event info and spectator service
- Ticketing
- VIP and hospitality
- Fan Zone
- Market square event area
- First Aid and medical services
- Security guards

LOC = LOCAL ORGANISING COMMITTEE



EUROBASKET 2025





TAMPERE
FINLAND
2025

BASIC INFO ABOUT THE EVENT

VOLUNTEER TEAMS & LOC

ACCREDITATION, GEAR & TRANSPORT





ACCREDITATION

An accreditation card is your access pass, which allows you to move within the event area in zones marked on your card.

Accreditation cards are issued to all teams, referees, FIBA officials, members of the organizing committee, volunteers, and media representatives.

The accreditation card **permits access only to the zones necessary for your duties**, which are indicated on the card using letters and numbers.

- Your accreditation card will be checked every time you enter the arena and in several areas inside the venue.
- You must **wear the card visibly around your neck at all times** and show it when requested.
- The card is **personal and non-transferable**.
- If you lose your card, immediately notify your team leader and the accreditation office.

Do not take a photo of your accreditation card! **Images, copies, or details of your card must not be posted on social media.**

ACCREDITATION

Photo requirements for the accreditation card

- Clearly framed headshot
- Taken straight from the front
- Plain white or light background
- No hats, caps, sunglasses, or other accessories (regular glasses are OK)
-
- You can send your photo in advance to: volunteer@basket.fi
- While a photo can be taken at the accreditation office, this may cause delays – sending it beforehand is highly recommended.



ACCREDITATION

Pick up your accreditation card **in person** at the accreditation office **well before your first shift.**

You will need to present a **valid photo ID**, such as:

- Passport
- Driver's license
- ID card
- Kela card with a photo
- Or any other official photo ID

Accreditation Office

Located at the Arena.
Opening hours:

- **Sun 24.8.** – 08:00–22:00
- **Mon 25.8.** – 08:00–22:00
- **Tue 26.8.** – 08:00–22:00
- **Wed 27.8.** – 08:00–22:00
- **Thu 28.8.** – 12:00–16:00
- **Fri 29.8.** – 12:00–20:30
- **Sat 30.8.** – 12:00–20:30
- **Sun 31.8.** – 12:00–16:00
- **Mon 1.9.** – 12:00–20:30
- **Tue 2.9.** – 12:00–16:00
- **Wed 3.9.** – 12:00–20:30

CLOTHES

All volunteers will receive **two light blue Nike tournament T-shirts** for use during their shifts. The gear package also includes **a bag and a water bottle**. Depending on the team and tasks, volunteers **also receive additional items**.

Volunteers should wear **neat, dark-colored bottoms**.

Suitable options include:

- Black or dark blue long trousers
- Smart sweatpants or jeans
- Knee-length shorts or skirts

Please note:

- **Shorts and skirts must reach the knee** – no mini-lengths.
- No **visible sports brands or logos** on bottoms (except for Nike), except for small and subtle ones.

Clothing and gear can be collected from the volunteer lounge clothing station starting Saturday, August 23.

For more information about your specific team's gear, please contact your team leader or the event office.



Team leaders and organising committee members can be recognized by their bright blue shirts.



PUBLIC TRANSPORT

Transportation is the **largest source of environmental emissions** in events like this – but **you can make a difference!**

It's easy to reach the Arena by **public transport, on foot, or by bike.**

All volunteers will receive a **Nysse travel card**, valid on **zones A, B, and C** for buses and trams.

You'll get your travel card when you collect your accreditation.

The card is valid **until September 4.**
Choose the tram or bus – **move easily and sustainably!**

There are **very few parking spots near the Arena.**

If you're arriving from farther away by car, we can suggest different parking options and park & ride solutions.

Just ask at the event office for more details.



BASIC INFO ABOUT THE EVENT

VOLUNTEER TEAMS & LOC

ACCREDITATION, GEAR & TRANSPORT

SHIFTS, MEALS & SAFETY

SHIFTS



Work shifts are arranged **by each team.**

Some volunteers will begin their duties as early as **August 20**, while others will start on the **first game day, August 27.**

Most volunteers will have **pre-scheduled shifts**, but for some teams, **individual shifts are not pre-assigned.**

Please arrive at your shift **on time**, ready to begin your tasks.

If you become ill, **inform your team leader or the volunteer manager** as soon as possible.

Your **team leader assigns tasks** and knows what needs to be done and in which order.

Flexibility is possible – always discuss scheduling or changes **directly with your team leader.**

If you're interested in taking on **additional tasks outside your own team's duties**, contact the **tournament office.**

LOUNGE

The **volunteer lounge** is located on the **lowest level (Level 0)** of the Arena.

There, you'll find **coffee, tea, and snacks** available all day, every day.

The lounge is a place to **rest your feet and connect with other volunteers** during your breaks.

Lockers are available for storing your personal belongings.

Locker keys can be borrowed **one day at a time from the tournament office**, and availability is limited.

You're encouraged to **bring your own coffee or tea mug** to reduce disposable cup use.



HOT MEALS

Hot meals for volunteers and the organizing team are served at **Juvenes' Ratamo restaurant** in the **TAKK building**, right next to the Arena.

It's a short walk from the arena's ground level (Level 0).
Hot meals are provided **only during shifts that last more than 6 hours**.
Two meal times per day:

- Lunch
- Dinner

You'll receive a **meal voucher** from your team leader.

Every meal includes:

- Salad bar
- Several hot meal options
- Always a vegetarian option
- Bread and spread
- Beverage (water or juice)

All **special dietary needs** will be accommodated.



SAFETY

The **safety of all participants** is a top priority.

Everyone working at the event shares responsibility for safety.

You're not expected to be a hero, but by **staying alert** and **following instructions**, you may help **prevent accidents or even save lives**.

All volunteers are covered by the **OP Pohjola Doublecover insurance** during their shifts.

In case of an accident involving you or another volunteer:

- **Contact first aid immediately**
- Inform your **team leader or the tournament office**

⚠ Please note: the insurance **does not cover damages caused by negligence or intentional actions**.

You will receive **detailed safety instructions and important phone numbers** closer to the start of the tournament.

SAFETY

Zero tolerance for harassment

The event follows a Safer Space Policy that applies to all volunteers and staff. Key principles:

- Respect everyone
- Do not assume, do not discriminate
- Be inclusive and encouraging
- Take responsibility
- Address inappropriate behavior and harassment

A detailed Safer Space Policy will be shared with everyone. It includes guidelines on how to respond to any inappropriate or concerning situations.

The designated Harassment Contact Person during the tournament is the Volunteer and Sustainability Manager, Jaana Helminen.

There is also an anonymous feedback channel called "Koriskokemus", where you can share your thoughts or concerns confidentially.

Spectator Code of Conduct

These rules apply to the **audience, volunteers, and everyone involved** in the event, and will be translated into all participating countries' languages and included in the Spectator Guide.

Code of Conduct:

1. We stay positive and focus on cheering only.
2. We leave coaching to the coaches.
3. We do not shout at referees, coaches, or opponents.
4. There is zero tolerance for racism and bullying.



BASIC INFO ABOUT THE EVENT

VOLUNTEER TEAMS & LOC

ACCREDITATION, GEAR & TRANSPORT

SHIFTS, MEALS & SAFETY

**DEDICATED VOLUNTEER SEATS
& FAN SPIRIT**



DEDICATED VOLUNTEER SEATS



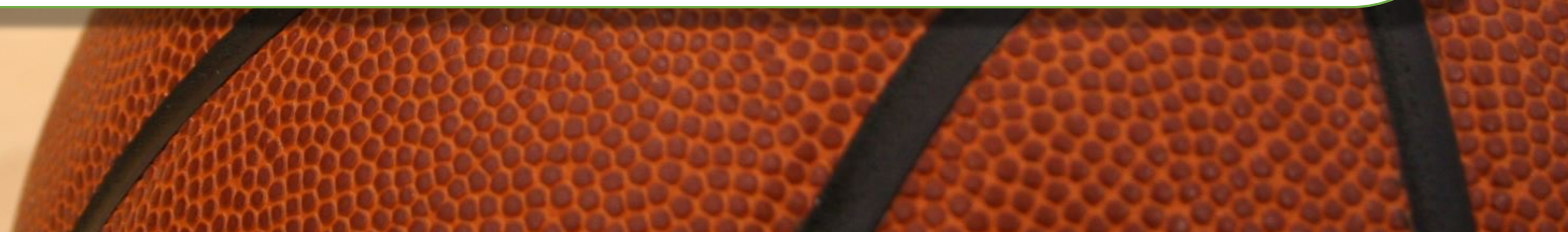
A **small, designated seating area** is reserved in the arena for volunteers to watch games **when their duties allow**.

Please note:

- **Seating is limited** and may have **restricted views**
- We **cannot guarantee a spot** for any specific game or seat

If you can't catch the game live:

- The **volunteer lounge** will have **TV broadcasts of the games**, where you can enjoy them with your fellow volunteers.
- **Fan Zone** and **Event Square** will also be buzzing during Finland's games with big screens, Susijengi fans, various activities, and food & drink stalls.



FAN SPIRIT



As volunteers, we're at work – during free time, we're fans!

Sports are full of emotion – and big tournaments bring even more passion.

But our **#1 task** is to provide **the best possible environment for all teams to perform at their best.**

Let's protect the teams' focus and peace.

A few important guidelines:

- **No selfies** with players while on duty
- **No autographs** from players during your shift – on shirts or anything else
- **Do not share behind-the-scenes details** or internal matters on social media or elsewhere
- **Photography is strictly prohibited** in locker room hallways – always, no exceptions!

What you *can* share

You're welcome to talk about your volunteer experience on **social media or in conversations.**

Feel free to share: Why you joined the volunteer team, what kind of tasks you've done, how much fun you're having as a volunteer, etc.

For **inquiries about event arrangements**, refer people to your **team leader**, who can forward them to the appropriate person in the organising committee.



TAMPERE
FINLAND

COMING SOON: VOLUNTEER INFO PACKAGE 2

Themes:

- Tips and perks for volunteers
- Event sustainability initiatives
- Communication guidelines
- Safety instructions
- Volunteer certificates of participation

CONTACT US

Questions? We're here to help!

Jaana is the tournament's Sustainability and Volunteer Manager.

She is your main point of support, and responsible for the entire volunteer program and here to help all volunteers.

Christian is the tournament's Volunteer Coordinator and Team Leader of the event office. He can assist you with all practical matters during the event.

Jaana Helminen
Sustainability and Volunteer Manager, EuroBasket25
Project Leader, Unified Through Basketball
jaana.helminen@basket.fi
+358 44 9757 009 (Whatsapp/calls/SMS)



Christian Hännikäinen
Volunteer Coordinator, EuroBasket25
Team Leader of the event office
christian.hannikainen@basket.fi





TAMPERE
FINLAND



THANK YOU!